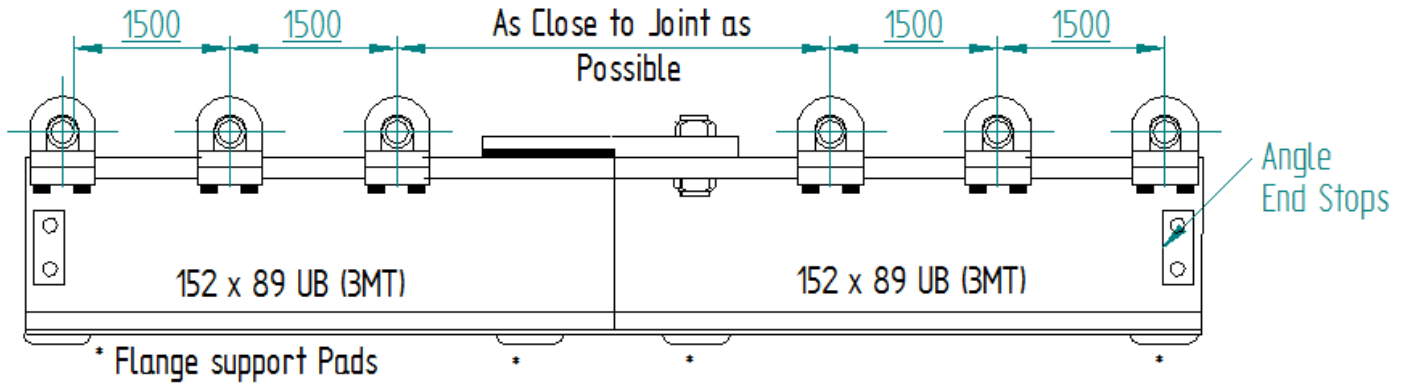
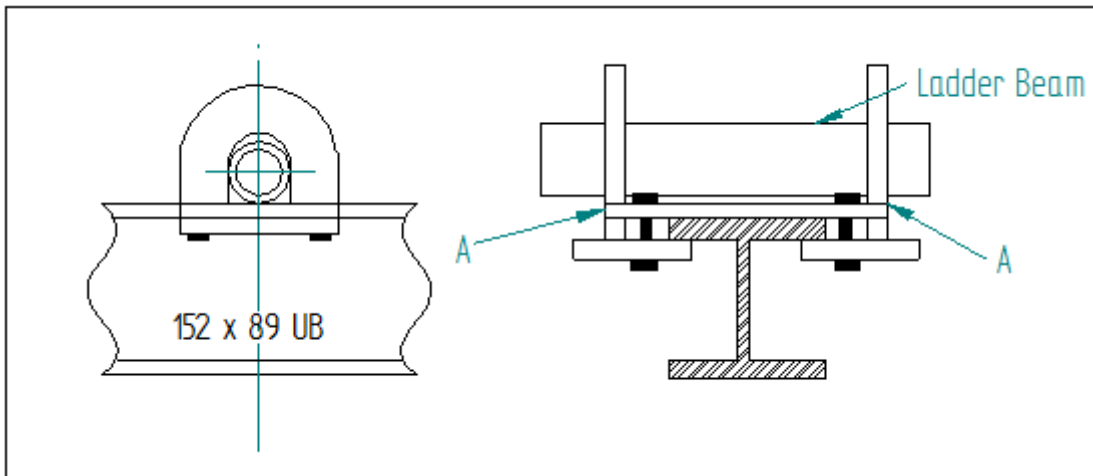


Rope & Marine Services Limited – Safety Instructions
Monorail – Correct Fit Up to Scaffold Detail



Monorail To Scaffold Connection Detail



Beams

Supplied in 3 meter sections from 152 x 89 UB, fasten plate to top flange (Secure each joint with 2 x M12 grade 8.8 fastenings with shake proof washers etc)

Bracket (Beam to Scaffold)

Use minimum 3 brackets per 3 meter beam sections (secure with 4 x M12 grade 8.8 fastenings with shake proof washers per bracket)

Minimum spacing 1500mm between brackets. Support joint with bracket either side (as close to joint as possible)

End Stops

A pair to be fitted to each end of completed monorail system (Secure with 2 x M10 grade 8.8 fastenings with shake proof washers per pair)

Suitable for maximum SWL 1000kg (With 1500mm maximum between supports) – suitability of a scaffold structure for safe working loads (and self-weight of structure and hoists, if relevant) to be approved by others.