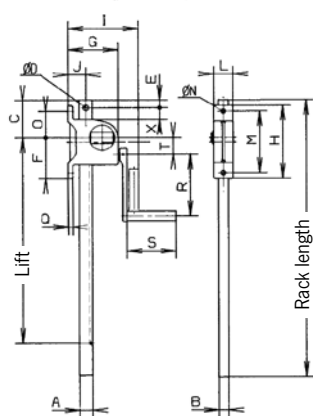


Technical data model ZWW

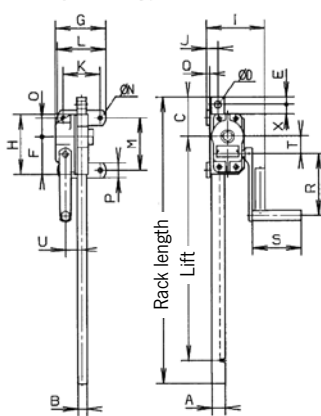
Art.-No.	Gear type	Load safety	Capacity kg	Lift per crank rotation mm	Crank effort daN	Rack length mm	Lift mm	Weight kg
030052000	Worm gear	self-locking	250	11	11	740	550	9
030053007	Worm gear	self-locking	500	11	16.5	895	700	10
030054003	Worm gear	self-locking	1000	3.8	22	765	600	11
030055131	Spur gear	Sifeku	1500	14	28	1090	800	11
030056138	Spur gear	Sifeku	3000	8.6	28	975	565	19
030057134	Spur gear	Sifeku	5000	4.5	28	1170	700	28
030058009	Spur gear	Siku	10000	3.2	40	1240	700	55

Dimensions model ZWW

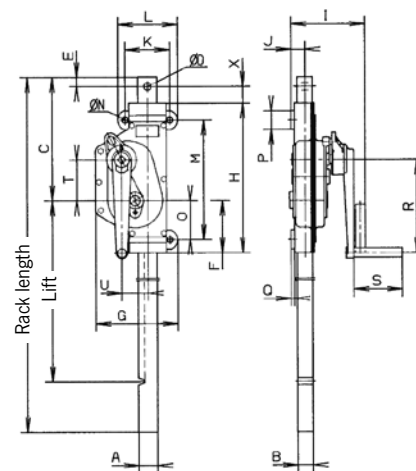
Art.-No.	030052000	030053007	030054003	030055131	030056138	030057134	030058009
A, mm	35	35	35	35	45	50	60
B, mm	25	25	25	25	30	40	50
C, mm	100	100	105	215	280	330	380
Ø D, mm	16	16	21	21	21	21	30
E, mm	20	20	20	20	25	25	30
F, mm	109.5	109.5	100	135	165	140	160
G, mm	133	133	134	151	212	219	269
H, mm	195	195	160	310	395	400	480
I, mm	188	188	155	168	179	197	200
J, mm	47.5	47.5	29.5	26	31	37	39.5
K, mm	-	-	100	100	120	120	140
L, mm	52	52	130	130	160	160	180
M, mm	165	165	140	260	305	320	410
Ø N, mm	12.5	12.5	12.5	12.5	14.5	17	21
O, mm	70.5	70.5	50	110	120	105	125
P, mm	-	-	40	40	50	50	60
Q, mm	12	12	8	8	10	10	10
R, mm	165	220	165	250	250	250	300
S, mm	130	130	130	130	130	130	250
T, mm	44.5	44.5	46.8	42.4	86.25	109.1	150.4
U, mm	-	-	44	43.3	53.1	69.5	88.3
X, mm	32	32	25	20	25	45	30



Model ZWW
Capacity 250 - 500 kg



Model ZWW
Capacity 1000 kg



Model ZWW
Capacity 1500 - 10000 kg