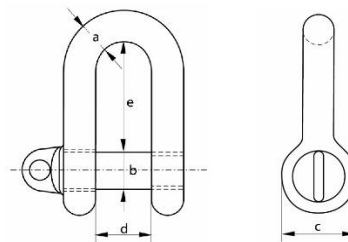


## British Standard Self Colour Large Dee Shackle



- \* **Material:** Body and pin High tensile Steel
- \* **Safety Factor:** MBL equals 5 x WLL
- \* **Standard:** Generally to BS3032 table 2 - 1958
- \* **Finish:** Self Colour
- \* **Certificates:** Supplied with relevent certificates



Working Load Limit	Diameter Bow	Diameter Pin	Diameter Eye	Inside Width	Inside Length	Weight Each
tons	a inch	b inch	c inch	d inch	e inch	kg
0.25	1/4	3/8	3/4	1/2	1	0.06
0.50	3/8	1/2	1	3/4	1.1/2	0.16
0.75	1/2	5/8	1.1/4	1.1/8	2.1/8	0.35
1.50	5/8	3/4	1.1/2	1.1/4	2.1/2	0.63
2.00	3/4	7/8	1.3/4	1.1/2	2.7/8	1.00
3.00	7/8	1	2	1.3/4	3.1/4	1.54
3.75	1	1.1/8	2.1/4	2	3.3/4	2.21
5.00	1.1/8	1.1/4	2.1/2	2.1/8	4.1/8	3.11
6.00	1.1/4	1.3/8	2.3/4	2.3/8	4.1/2	4.33
7.00	1.3/8	1.1/2	3	2.5/8	5	5.33
9.50	1.1/2	1.3/4	3.1/2	2.3/4	5.3/8	8.46
11.25	1.5/8	1.7/8	3.3/4	3	5.3/4	10.48
13.00	1.3/4	2	4	3.1/4	6.1/8	12.66
14.25	1.7/8	2.1/8	4.1/4	3.5/8	7	15.34
16.25	2	2.1/4	4.1/2	3.7/8	7.3/8	18.50
18.00	2.1/8	2.3/8	4.3/4	4.1/8	7.3/4	23.80
20.00	2.1/4	2.1/2	5	4.1/4	8.1/4	28.60