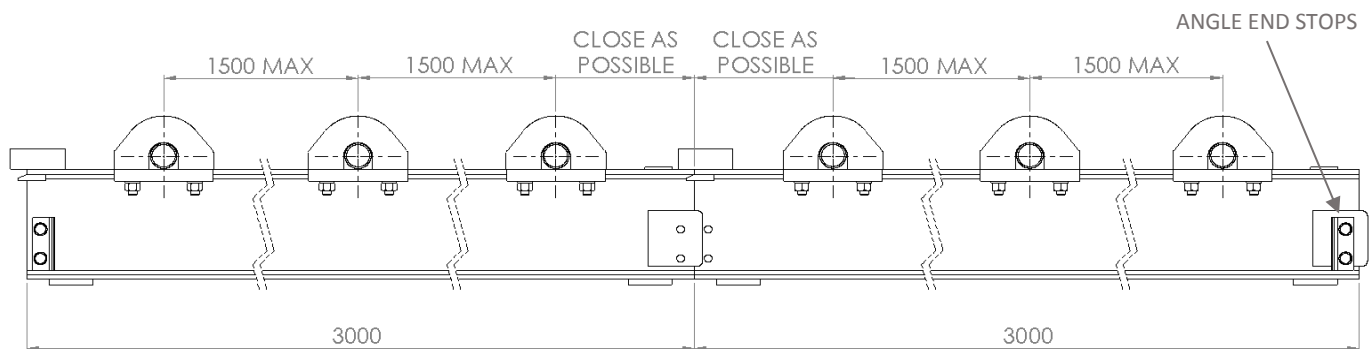
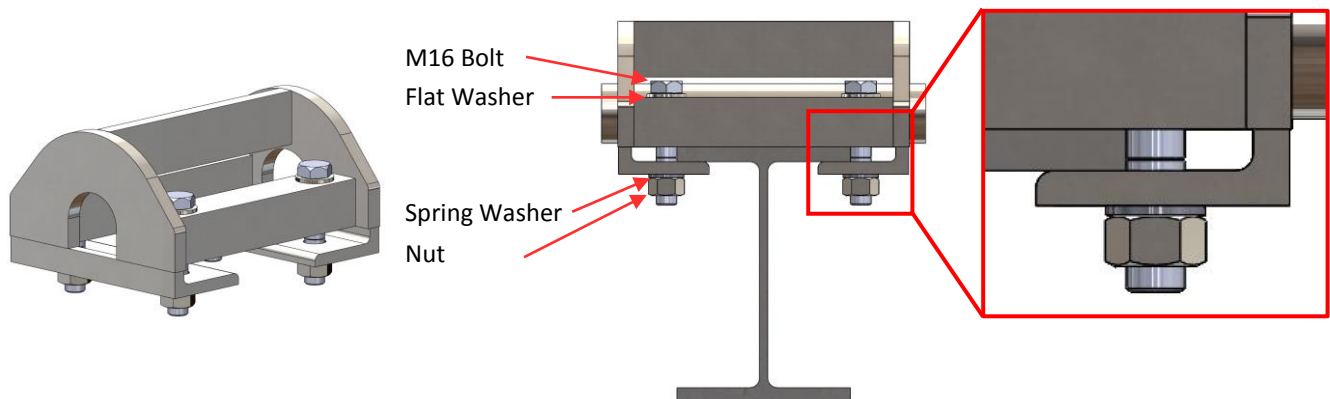


Runway Beam Assembly Instruction - RB032T

Correct fit to scaffold for 2t Runway Beam



2t Clamp to Runway Beam Connection Detail



Beams

Supplied in 3m sections from 207 x 133, 9.6mm flange UB. Secured by sliding into place with the splice plates as shown.

Bracket

Minimum 3 brackets per 3m beam section and secure with fasteners as shown.

Maximum 1500mm spacing between brackets.

Brackets must be placed as close to runway beam joints as possible.

End stops

A pair of angle end stops to be fitted to each end of completed runway beam system, secured with M12 bolt, flat & spring washers and nuts.

Installation

To be installed by a competent person.

Suitability of scaffold structure for working load (plus self weight of structure & hoists if applicable) to be approved by a competent person.

Not certified for use until load tested by a competent person unconnected to the installation.

When installed correctly, WLL of 2000kg.